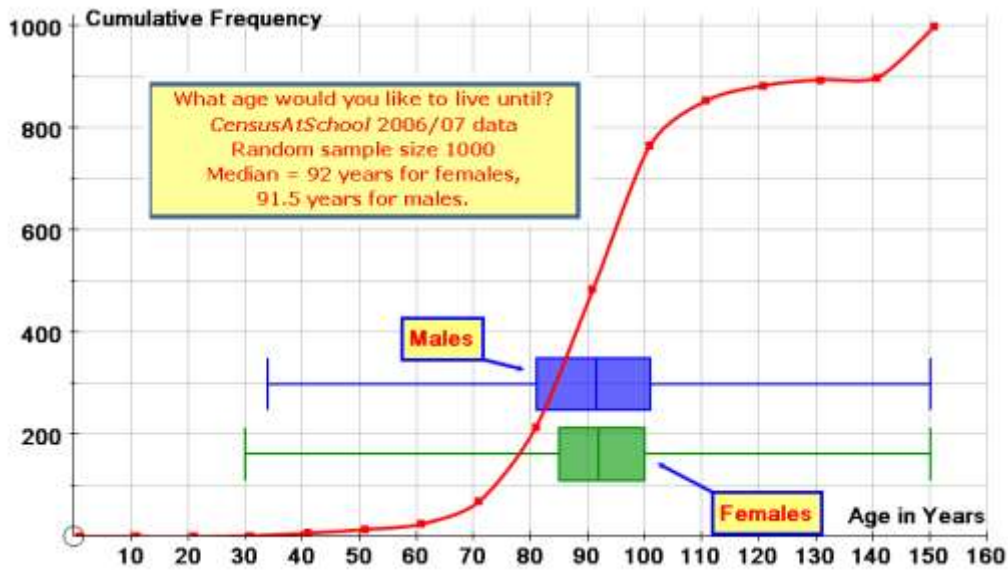




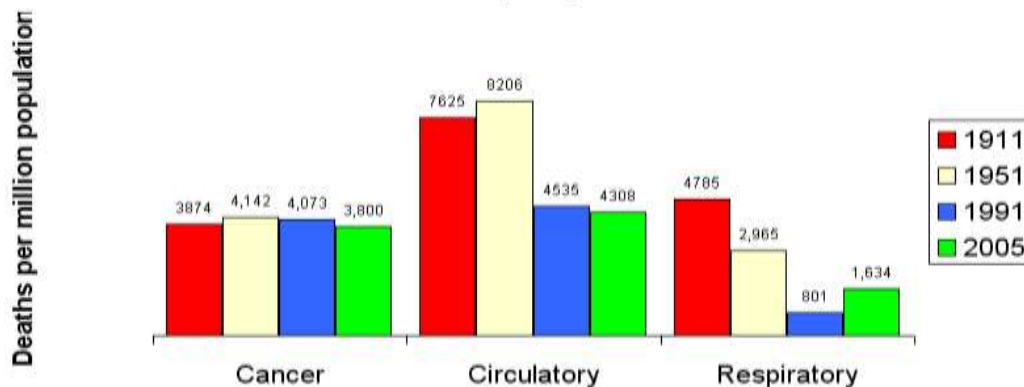
How Old? – Data sheet



Class Int.	Mid. Int. (x)	Class Width	Freq.	Cum. Freq.
$1 \leq x < 11$	6	10	0	0
$11 \leq x < 21$	16	10	0	0
$21 \leq x < 31$	26	10	2	2
$31 \leq x < 41$	36	10	5	7
$41 \leq x < 51$	46	10	7	14
$51 \leq x < 61$	56	10	11	25
$61 \leq x < 71$	66	10	44	69
$71 \leq x < 81$	76	10	146	215
$81 \leq x < 91$	86	10	270	485
$91 \leq x < 101$	96	10	281	766
$101 \leq x < 111$	106	10	88	854
$111 \leq x < 121$	116	10	29	883
$121 \leq x < 131$	126	10	11	894
$131 \leq x < 141$	136	10	5	899
$141 \leq x < 151$	146	10	101	1000

Table of Values of "What age would you like to live until?"

UK Deaths by Major Cause

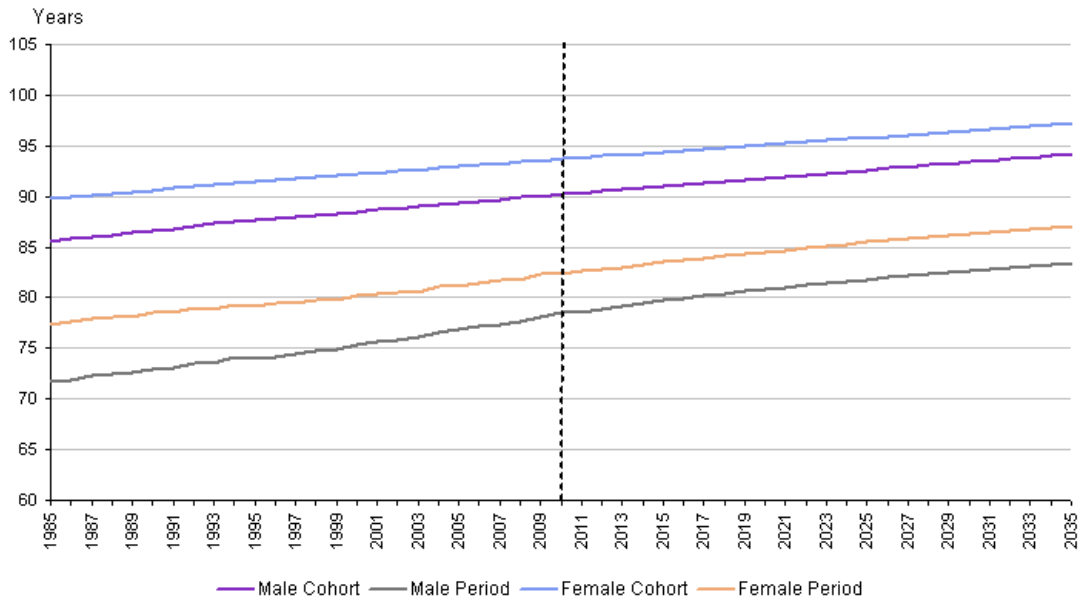




How Old? – Data sheet

Period and Cohort expectation of life at birth, 1985-2035, UK

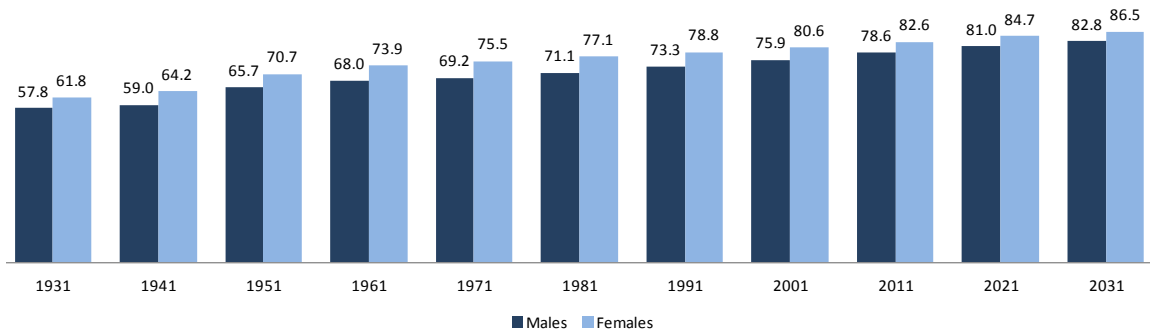
(Based on historical rates from 1985 to 2010 and assumed calendar year mortality rates from the 2010-based principal projections)



Source: Office for National Statistics

UK Life Expectancy from Birth

Source: Office for National Statistics



Social Trends 2007

Table 7.2

Life expectancy, healthy life expectancy and disability-free life expectancy¹ at birth: by sex

Great Britain

Years

	Males		Females	
	1981	2002	1981	2002
Life expectancy	70.9	76.0	76.8	80.5
Healthy life expectancy	64.4	67.2	66.7	69.9
Years spent in poor health	6.4	8.8	10.1	10.6
Disability-free life expectancy	58.1	60.9	60.8	63.0
Years spent with disability	12.8	15.0	16.0	17.5

Source: Government Actuary's Department; Office for National Statistics