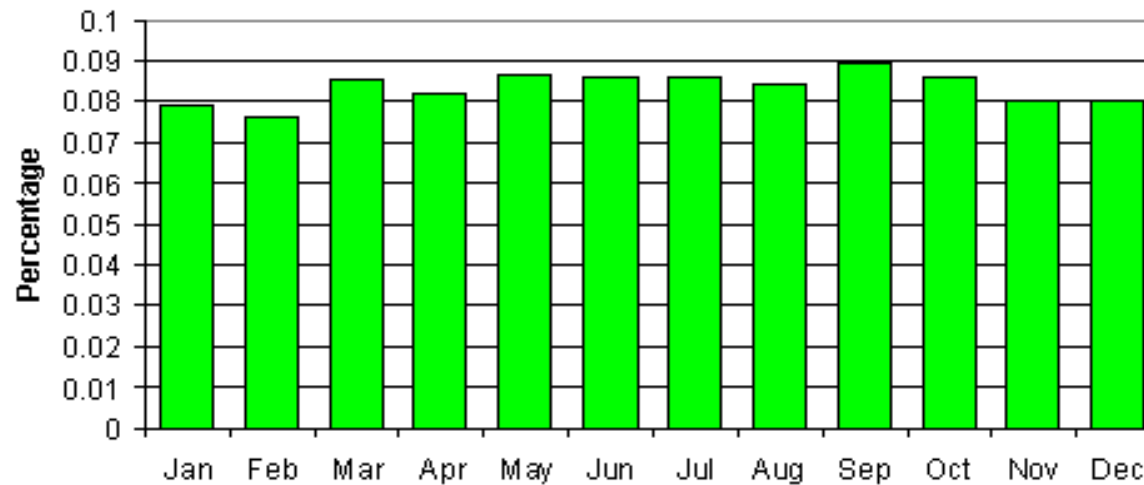


Birth Months of CensusAtSchool Pupils



A bar chart showing which month 59,000 children aged 7 to 16 have their birthday in.
Data taken from Phase 1 of the CensusAtSchool project, Autumn 2000.

Why are the bars not all exactly the same height?

What would a similar bar chart for your class look like? Why would it not look like this one?

If the graph were for Birth Months of Polar Bears instead of people, how would it change?