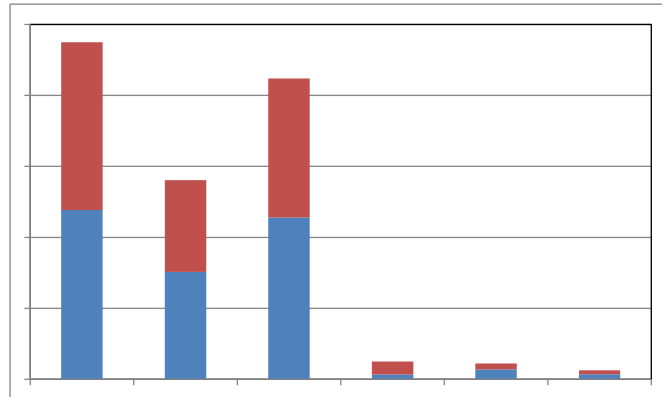




What information does this graph give you?

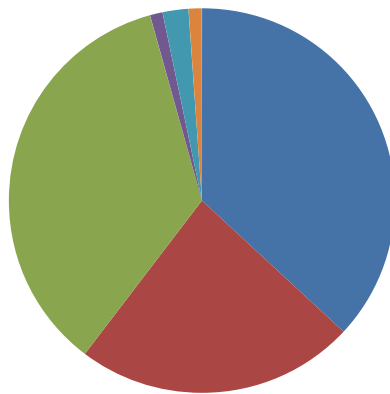
Look at the graph below. What information does this graph give you?



Absolutely nothing is the answer. Just having a title would be an improvement.

So how about this one?

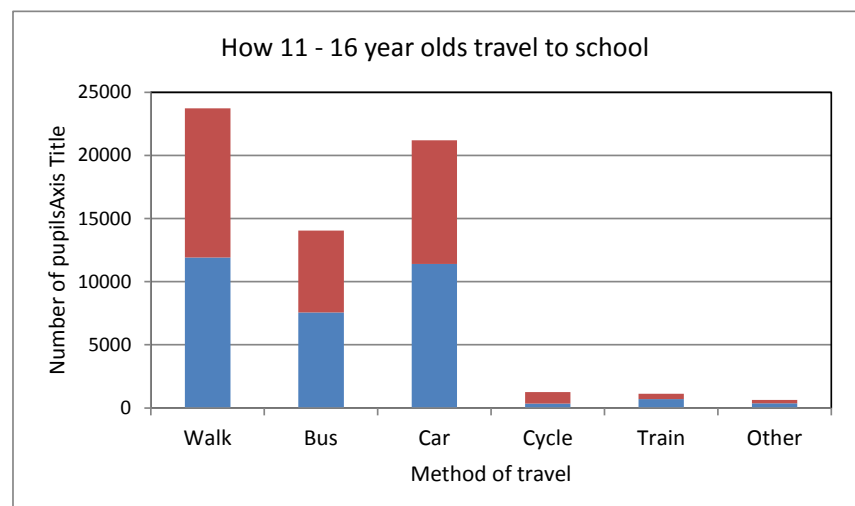
How 11 - 16 year olds travel to school



At least we know what the chart is meant to be about, but what do the individual slices mean? What we need are **clear labels** to help us.

The graph below looks much better, but there are still a couple of things missing. Can you spot them?

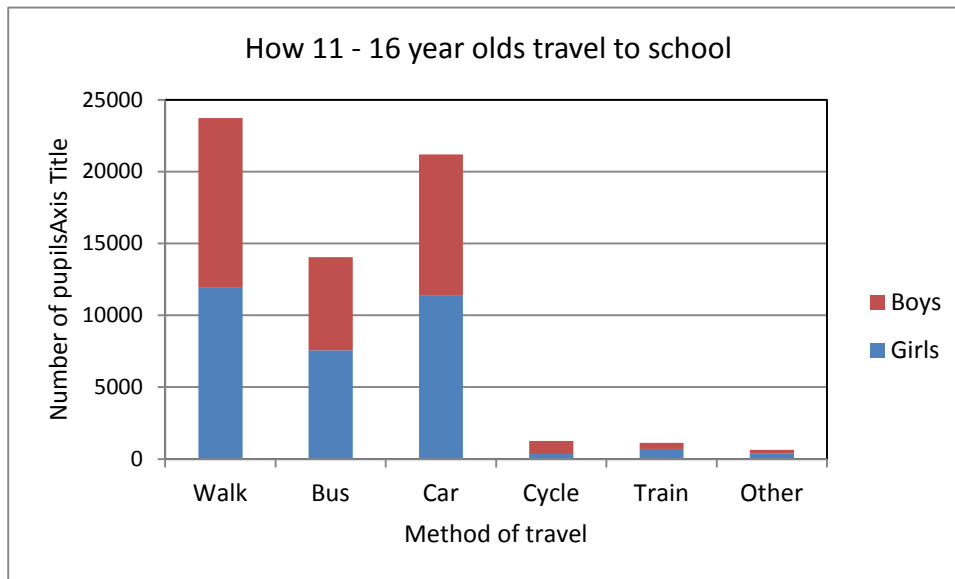
That's right – we need to know what the two colours in each bar mean and also where the data came from.





What information does this graph give you?

Let's have a final go:



Data from *CensusAtSchool* Feb 2001 - 61963 school children: www.censusatschool.org.uk

At last, a bar chart that gives us some useful information.

Always remember:

TITLE LABELS KEY

Now draw a **useful** bar chart of either the data given below or some data you have collected yourself.

Travel Method	Walk	Bus	Car	Cycle	Train	Other
Number of People	16	8	12	4	0	1